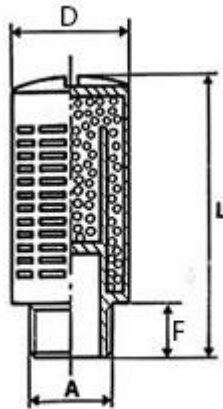


With granular filling, self-cleaning.

The spherical shape of the granules allows very fine dust to escape in addition to air.
Higher blow-off rate.

Operating pressure: max. 12 bar
Operating temperature: -20 °C to +70 °C



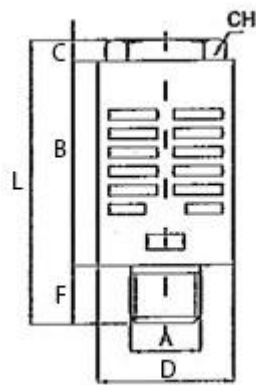
577-3

Plastic silencer, with granular filling

Art. No.	Type No.	Thread A	D mm	L mm	F mm	Noise level in dB at 4 bar	Noise level in dB at 6 bar
113376	577-1	G 1/8	15.0	33.0	6.0	84	87
113377	577-2	G 1/4	19.0	43.0	8.0	81	84
113378	577-3	G 3/8	24.5	57.0	11.0	83	90
113379	577-4	G 1/2	24.5	57.0	11.0	83	90
113380	577-5	G 3/4	48.0	112.0	17.5	85	91
113381	577-6	G 1	48.0	110.5	16.0	85	90

Impurities are retained due to the steel mesh and cotton cloth filling; only air escapes.
Improved silencing effect.

Operating pressure: max. 12 bar
Operating temperature: -20 °C to +70 °C



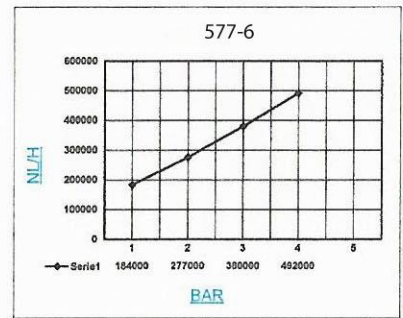
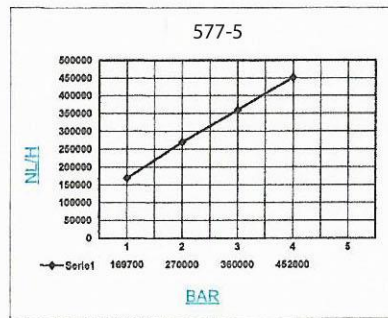
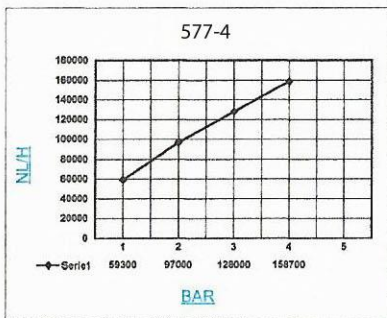
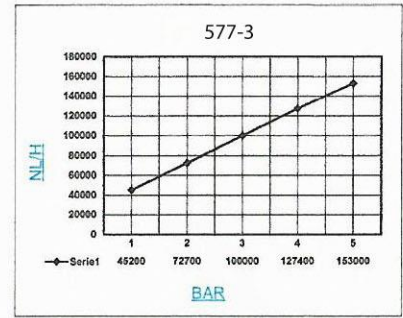
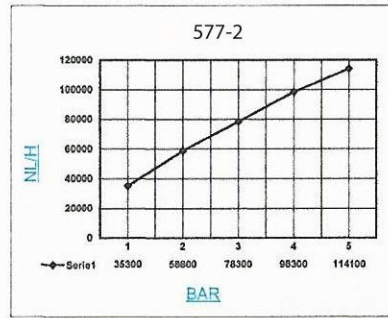
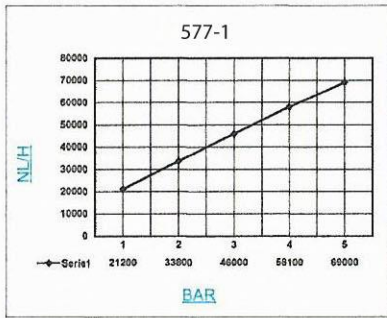
578-4

Plastic silencer, with steel mesh and cotton cloth filling

Art. No.	Type No.	Thread A	D mm	F mm	CH mm	B mm	L mm	C mm	Noise level in dB at 4 bar	Noise level in dB at 6 bar
113382	578-1	G 1/8	15.5	6.0	10	25.5	34.0	2.5	85	87
113383	578-2	G 1/4	19.5	8.0	12	32.0	43.0	3.0	86	90
113384	578-3	G 3/8	24.5	10.5	16	44.0	58.0	3.0	87	92
113385	578-4	G 1/2	24.5	10.5	16	44.0	58.0	3.0	87	92
113386	578-5	G 3/4	48.0	17.5	25	90.0	112.0	10.0	88	-
113387	578-6	G 1	48.0	16.0	25	90.0	110.5	10.0	88	-

Flow rates:

Type No. 577-1 to 577-6



Type No. 578-1 to 578-6

